

DVDlab

- [Home](#)
- [Screenshots](#)
- [Encoder](#)
- [Banners](#)

DVDlab PRO

- [Home](#)
- [Screenshots](#)
- [History](#)

DVD-9 DL

- [Home](#)

Resources

- [Tips & Tricks](#)
- [Help](#) 
- [Help](#) 
- [Help](#) 
- [Help](#) 
- [Help](#) 
- [FAQ](#)
- [History](#)

DVD Tools

- [Timecode calc](#)
- [Re-Aspect](#)

Articles

- [H. Theater](#)
- [DOF Machine](#)
- [3D Video](#)

Photo-Brush

- [Start here](#)

Real-Draw

- [Start here](#)

CompactDraw

- [Start here](#)

PhotoSEAM

- [Start here](#)

Multimedia Builder

- [Start here](#)

Other tools

- [UltraSnap](#)
- [Camera Tools](#)

Use Real-DRAW or DVD Menu Studio with DVD-lab

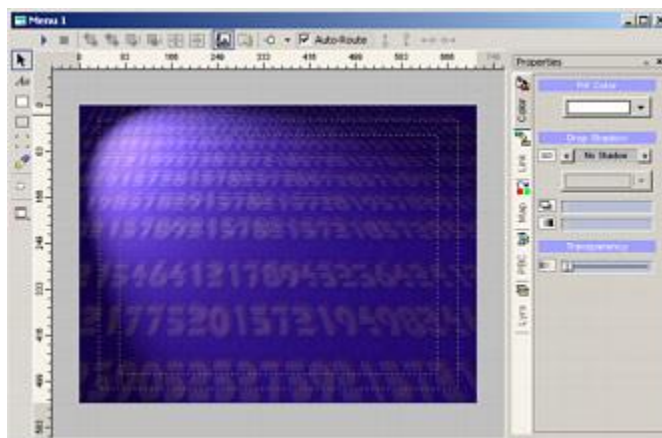
Embedded Vector Objects

DVD-lab can use a special developed Embedded Vector Object - which is an object created in Real-DRAW PRO 3.1 or DVD Menu Studio 1.1 and newer. The transport between these application is invisible, so you don't have to create the object in Real-Draw, then export it, then load it in DVD-lab. All is managed from within DVD-lab. Also such object carry all the properties of the original Real-DRAW vector object and can be edited in the same fashion all over.

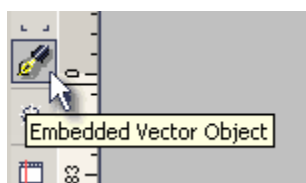
If you never tried [Real-DRAW](#) or [DVD MS](#) now is the best time. These are probably the best applications for creating buttons, headers and much more.

Note: At this point there is no difference between using Real-DRAW or DVD Menu Studio for the Embedded Object. Both works equally well.

1. First lets create a new menu in DVD-lab.



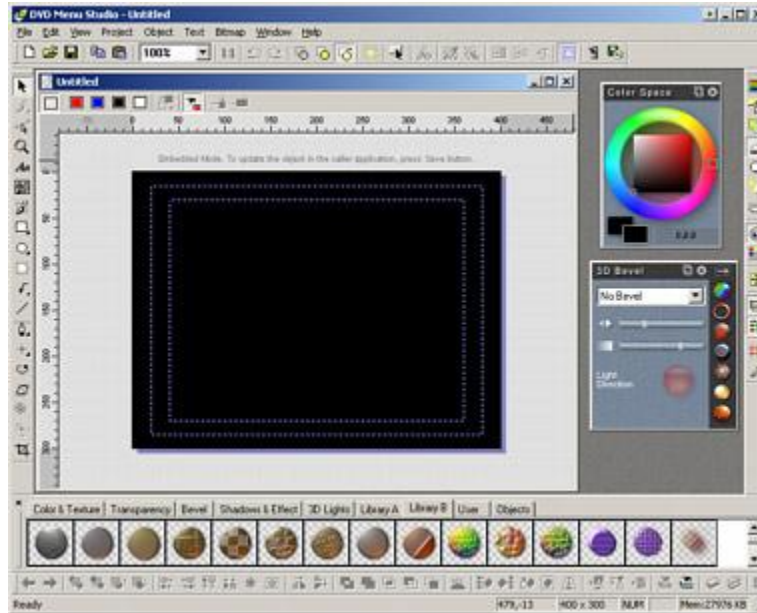
2. An Embedded Vector object is created by using the button with the Real-Draw icon on it.



After you click the button you will be informed what you are about to do. The DVD-lab now check if you have Real-DRAW 3.1 or newer or DVD Menu

Studio 1.1 or newer installed. The Embedded Object exchange is available only with these and newer versions. Since these new versions were created recently, you will probably have to get the new update for them on Mediachance download page.

3. If the correct version of Real-DRAW or DVD MS were found it will simply start it with empty project.



4. Above the canvas there is a gray text indicating that this document is in Embedded Mode. That means if you Save this document it will not write to disc but into the Caller application (which is DVD-lab)

Embedded Mode. To update the object in the caller application, press Save button.

5. So let's create some object. We can create text in DVD-lab, but in this example we create the text in the DVD MS and then apply special effect which isn't possible in DVD-lab. Of course you can create any other objects - vector, bitmap or even brush painting.



6. Now simply select a Style from the Library B in DVD MS.



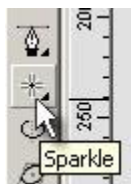
7. This style has also Drop-Shadow properties. However because we can add Drop Shadow in DVD-lab, the best would be to simply remove the shadow on from object and wait until we transfer it to DVD-lab.



8. So here is the result.



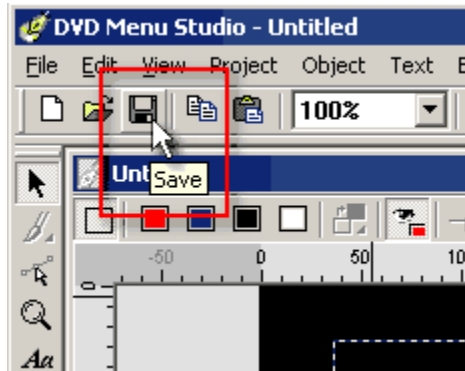
9. When you create Embedded Object it behaves in the Caller application (DVD-lab) same way as a Package in Real-DRAW or DVD MS. That means it can have many objects inside - it doesn't have to be a single object. So we will add a Sparkle to the text with DVD MS Sparkle Tool.



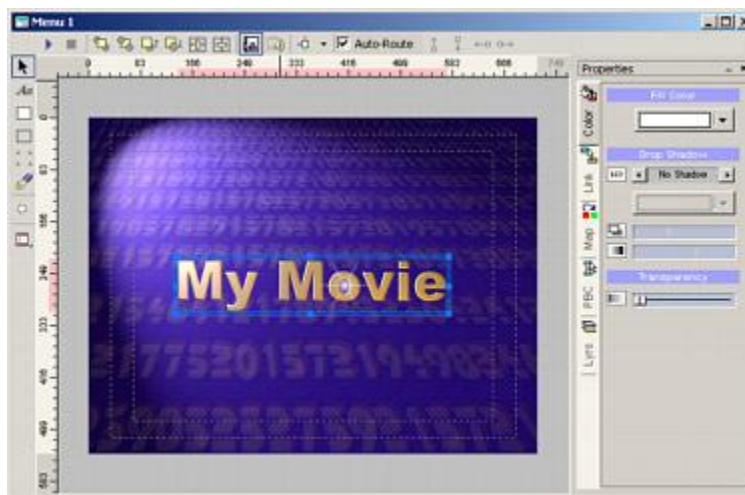
10. Here is the result in DVD MS.



11. So let's say that's enough. All we need to do is to click Save button.



12. The package will be send to DVD-lab without any disk hassle.



13. Here, in DVD-lab we can add shadow to it.



14. The object is always editable, just double click on it or use Edit Embedded... command and the package will again appear in Real-DRAW/DVD MS ready for editing.



Of course the Embedded object can be as simple or as complex as you want. And of course you can have many embedded objects on DVD-lab page.

[MMB web](#) | [DVD-lab](#) | [Real-DRAW](#) | [Photo-Brush](#) | [DCE AutoEnhance](#) |
[products](#) | [web board](#) | [galleries](#) | [search](#) | [contact](#) | [about](#) | [Buy Now](#)
© [www.MediaChance.com](#) 2000